

Bestand erhalten mit serieller Sanierung

Vom Altbau zum energieeffizienten modernen Wohngebäude



Architekturbüro
Mießl GmbH

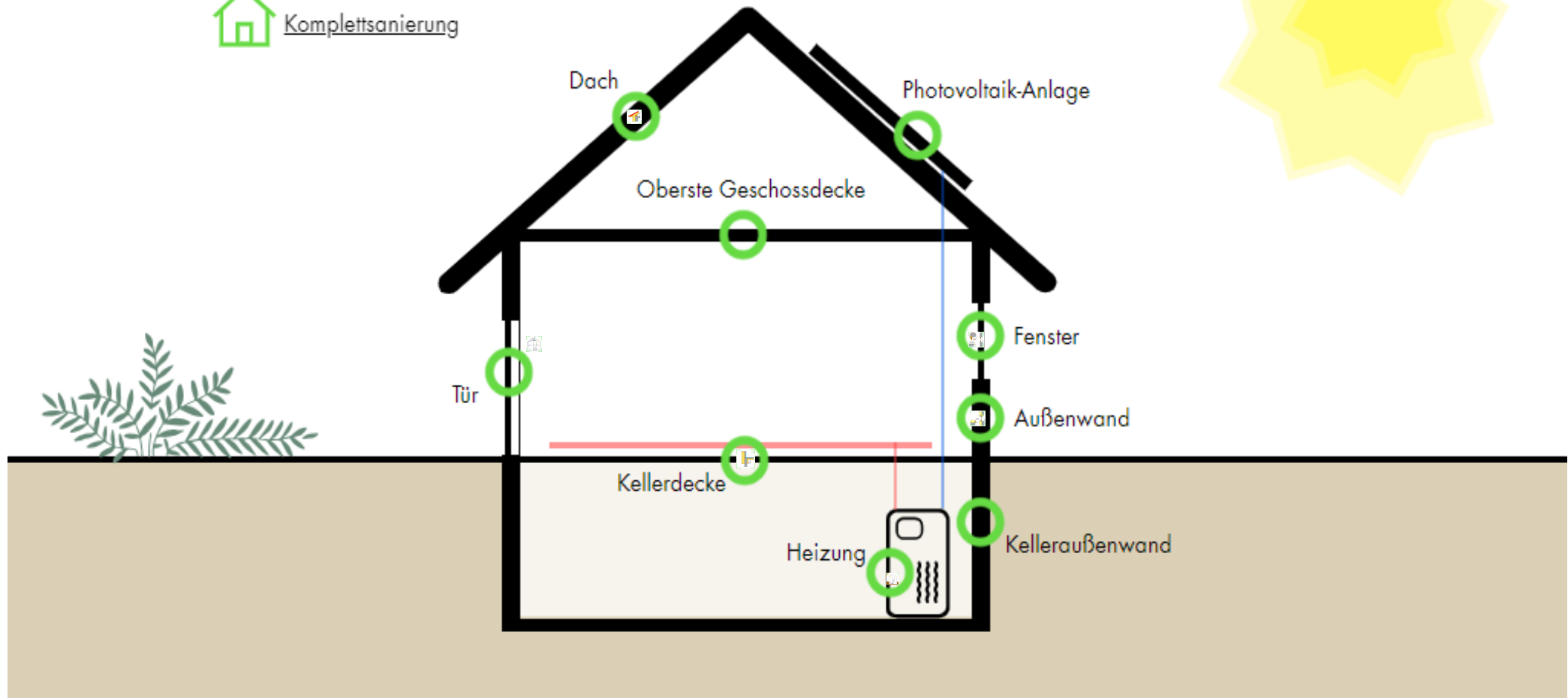
FEXERGY

Ingenieurbüro & Energieberatung

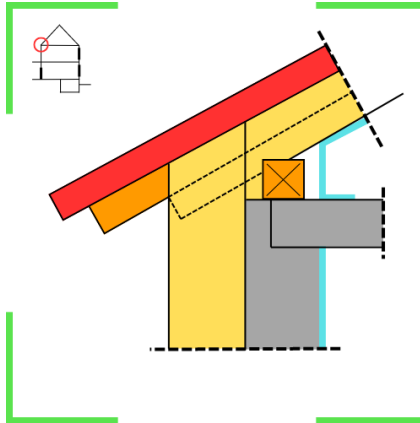
Welches Bauteil möchtest Du energetisch sanieren?



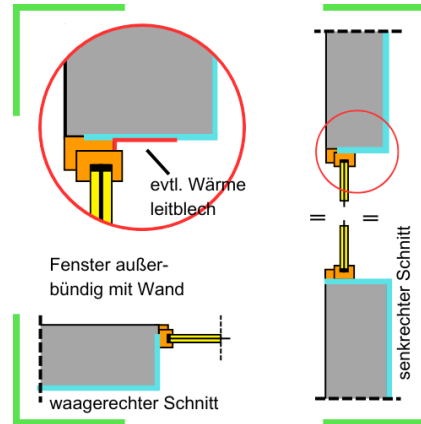
Komplettsanierung



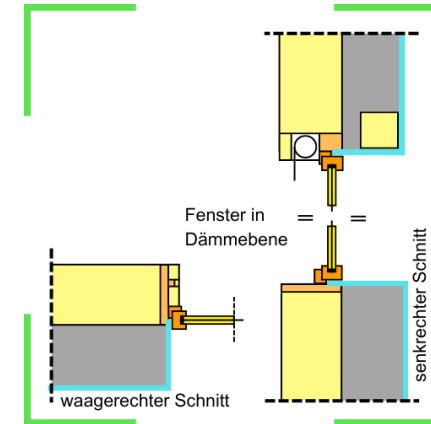
Dach



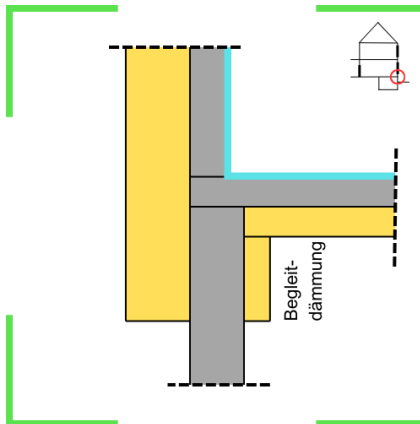
Fenster/ Türen



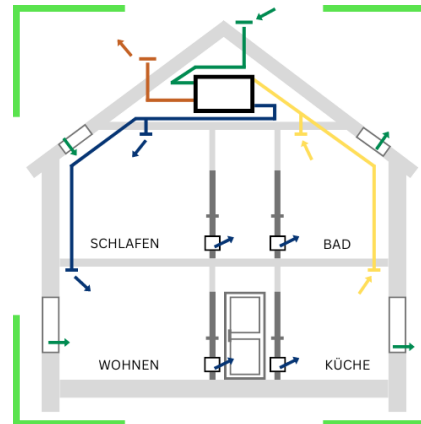
Fassade



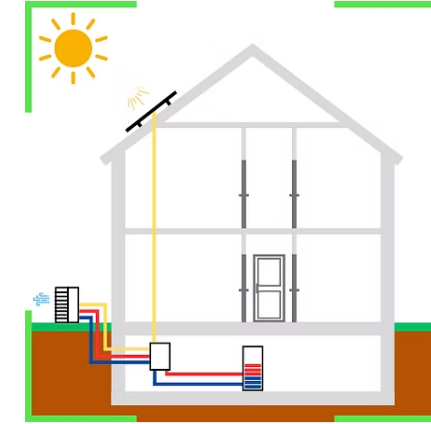
Geschossdecke



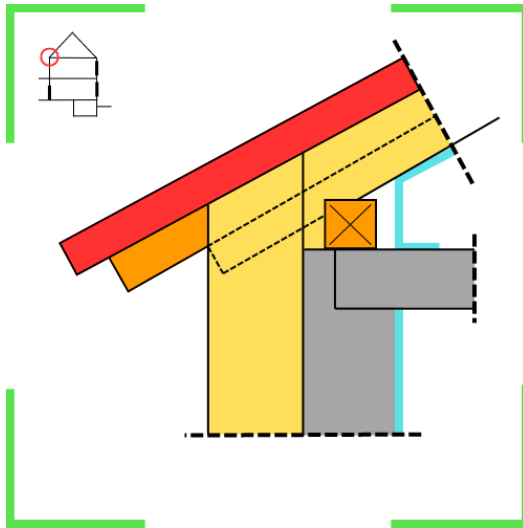
Lüftungsanlage



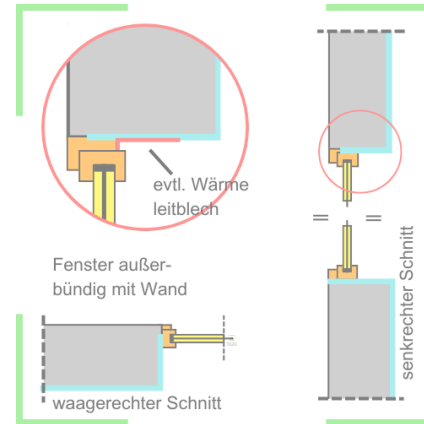
Heizung/ Warmwasser



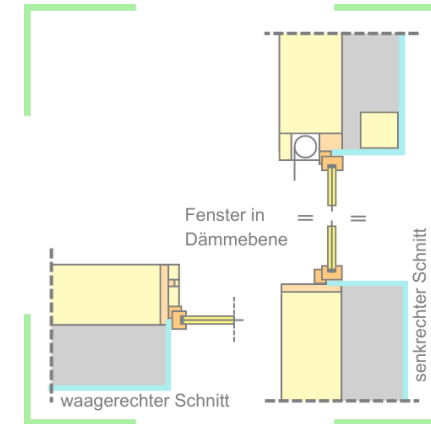
Dach



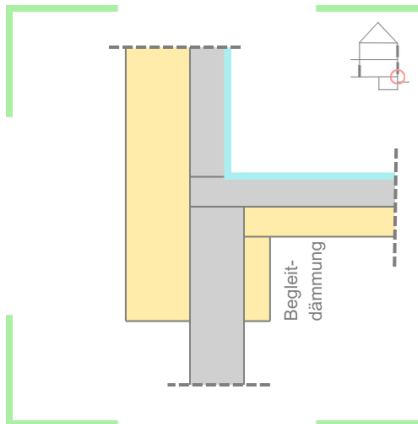
Fenster/ Türen



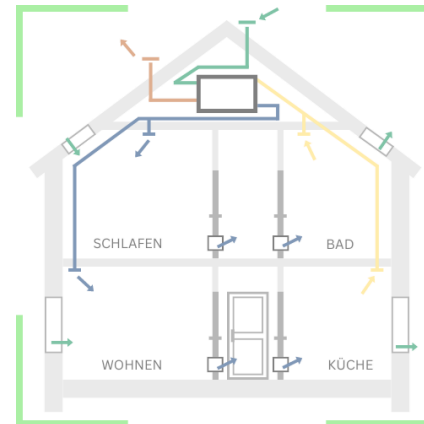
Fassade



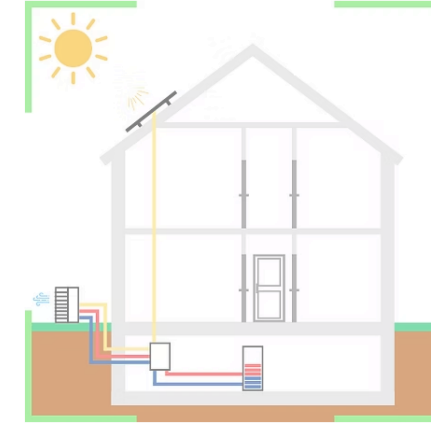
Geschossdecke



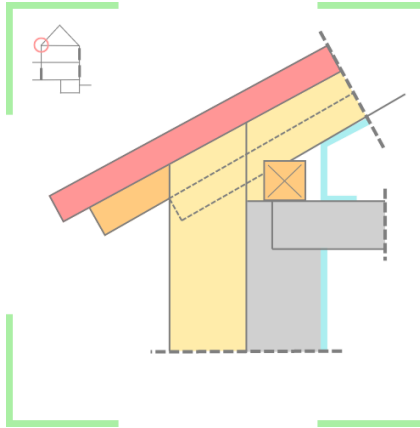
Lüftungsanlage



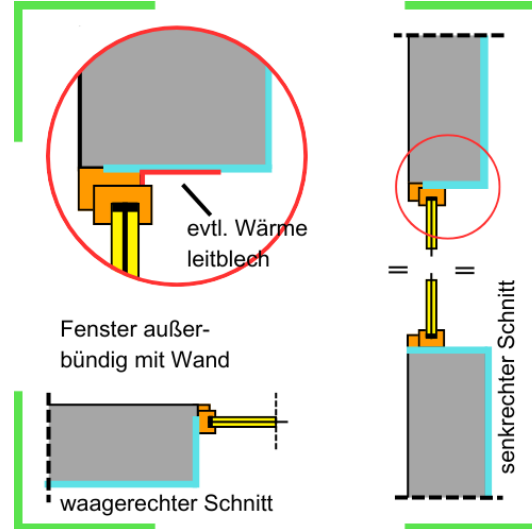
Heizung/ Warmwasser



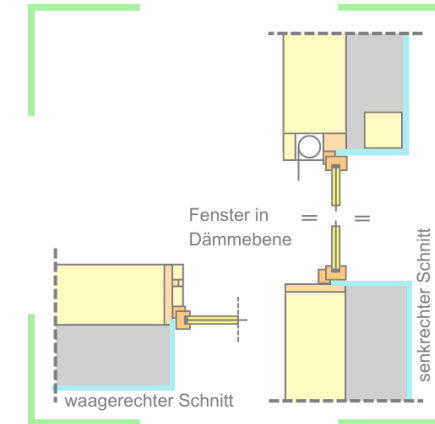
Dach



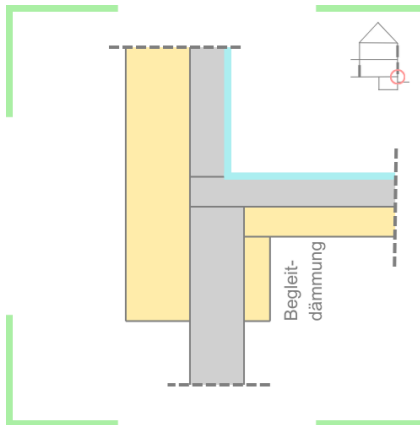
Fenster/ Türen



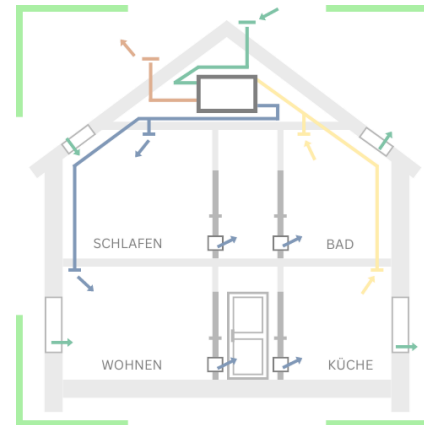
Fassade



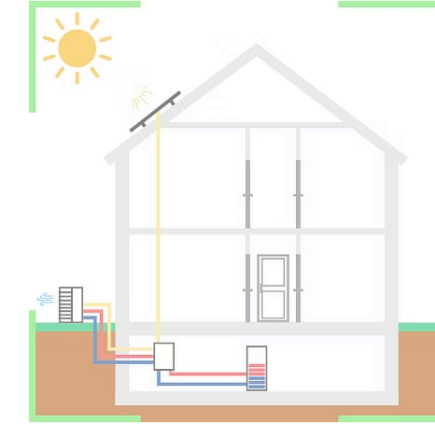
Geschossdecke



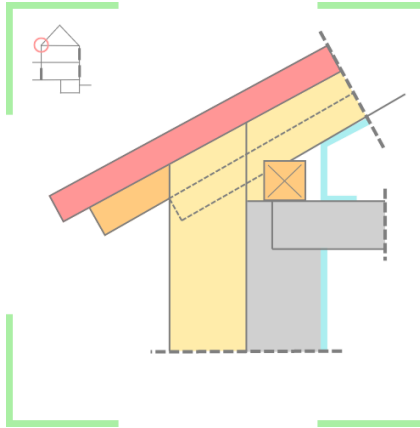
Lüftungsanlage



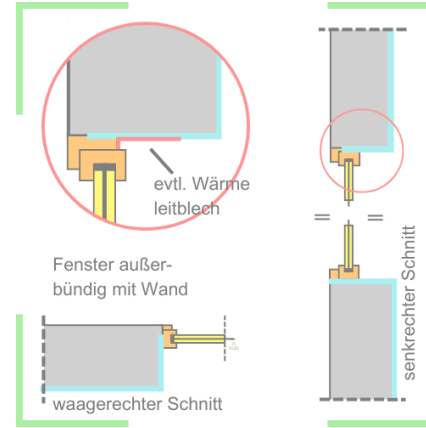
Heizung/ Warmwasser



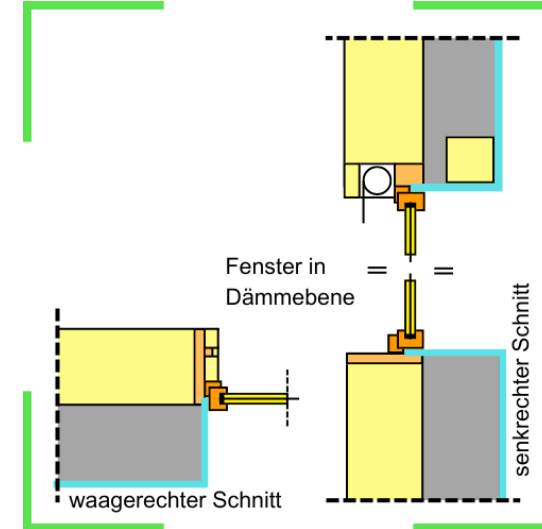
Dach



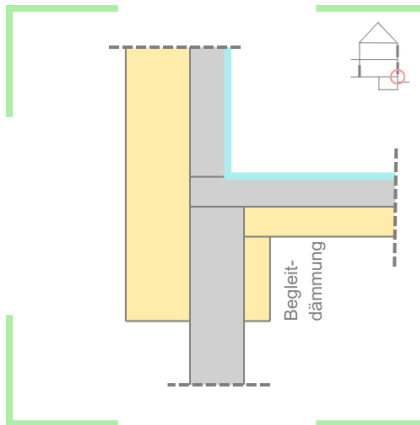
Fenster/ Türen



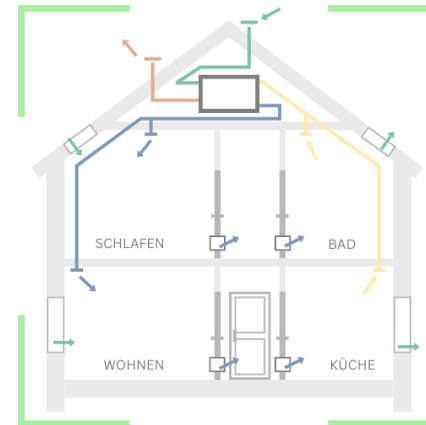
Fassade



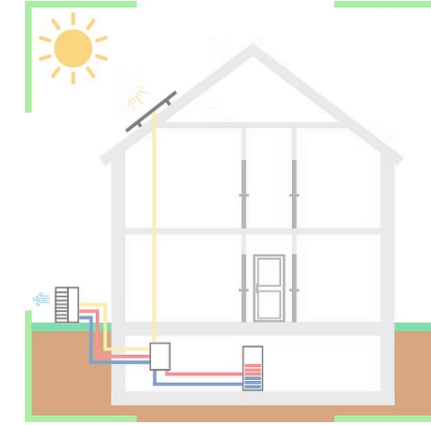
Geschossdecke



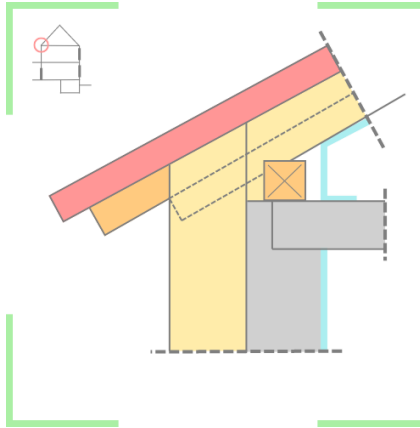
Lüftungsanlage



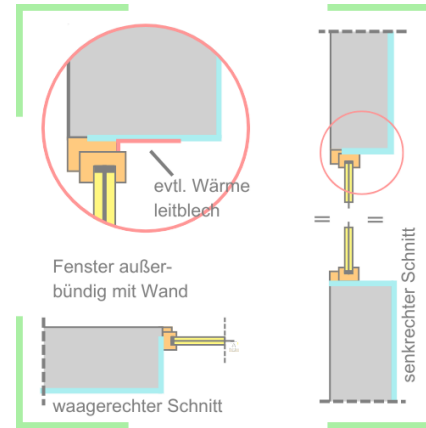
Heizung/ Warmwasser



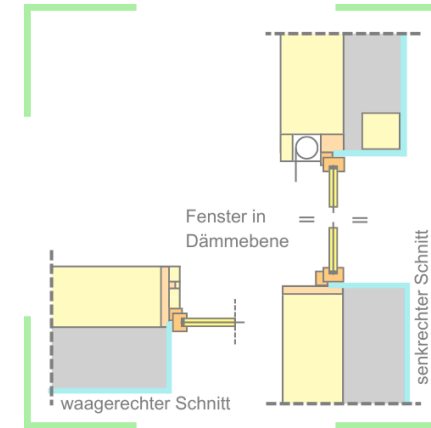
Dach



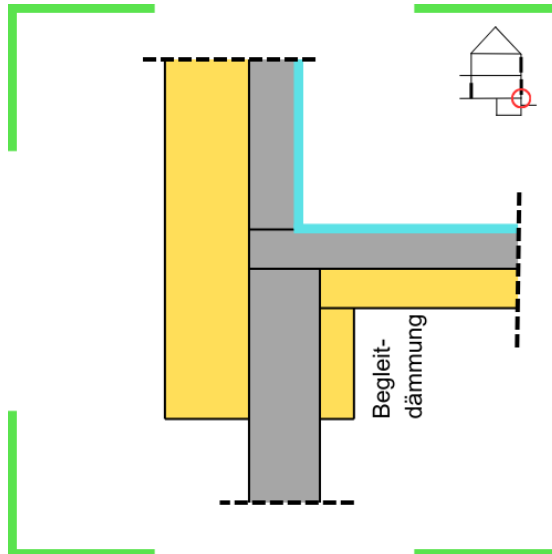
Fenster/ Türen



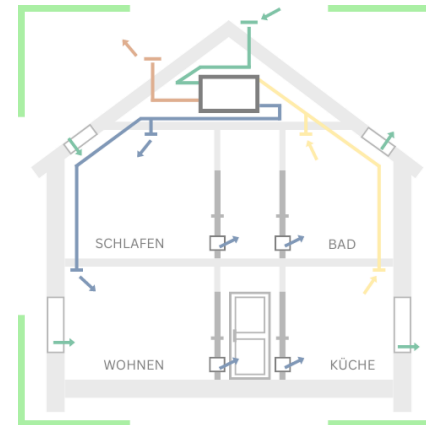
Fassade



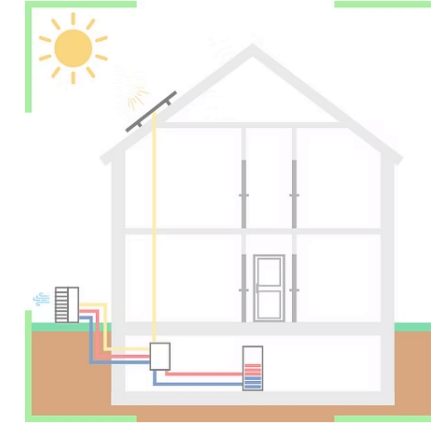
Geschossdecke



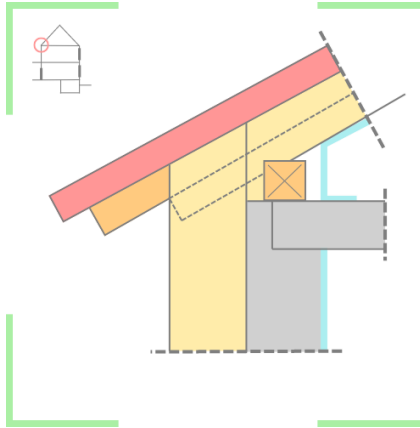
Lüftungsanlage



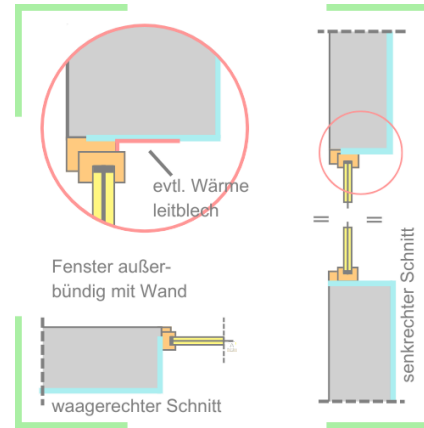
Heizung/ Warmwasser



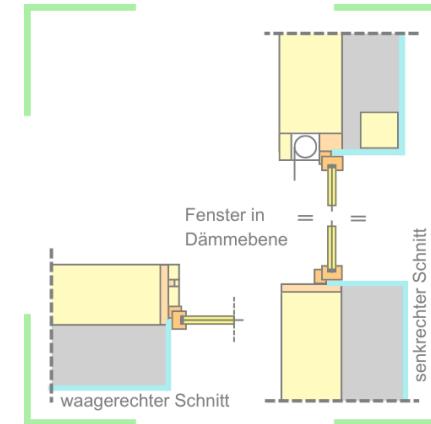
Dach



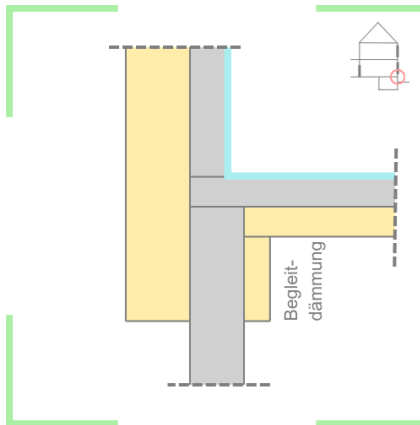
Fenster/ Türen



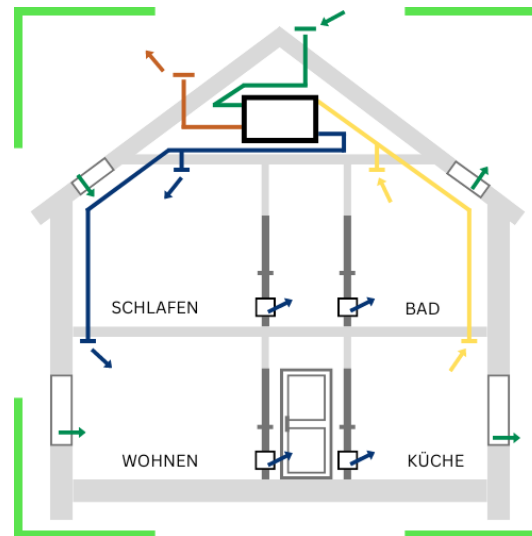
Fassade



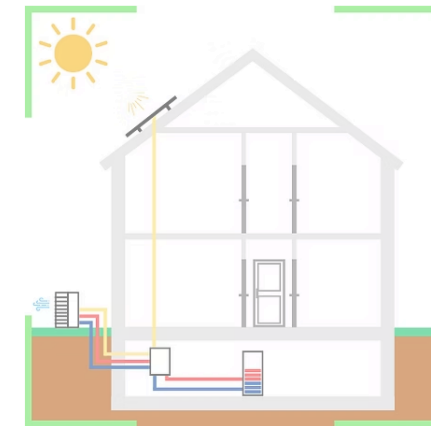
Geschossdecke



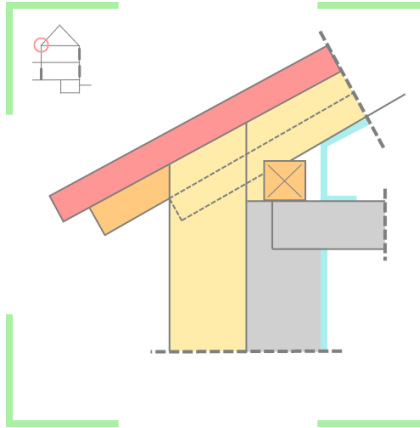
Lüftungsanlage



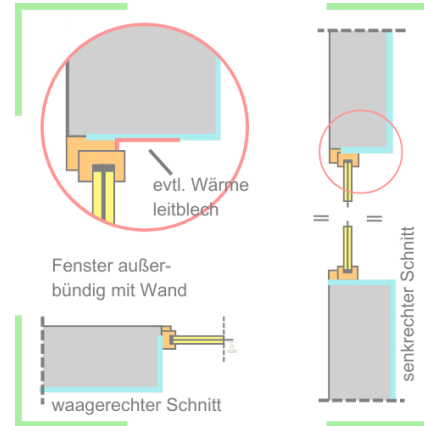
Heizung/ Warmwasser



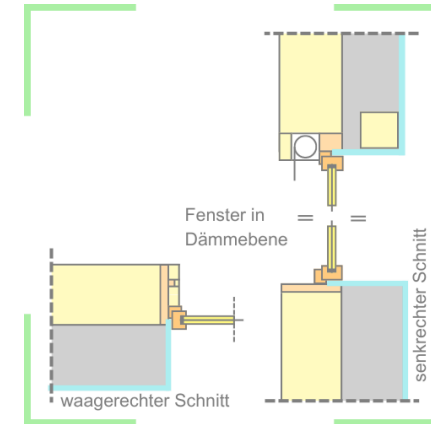
Dach



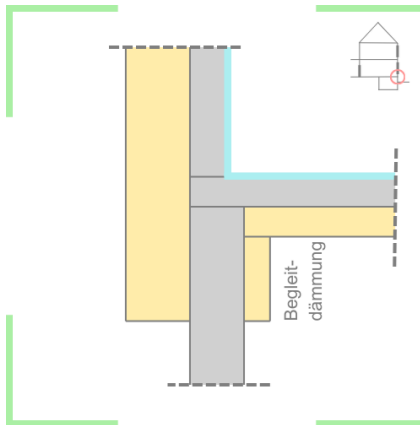
Fenster/ Türen



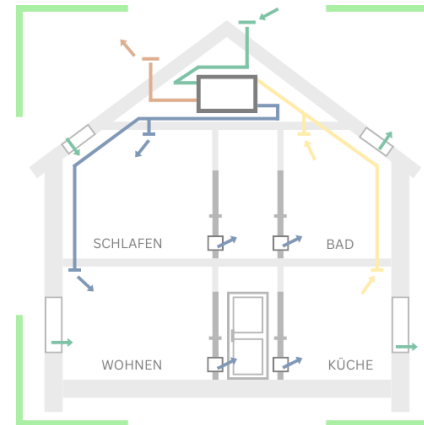
Fassade



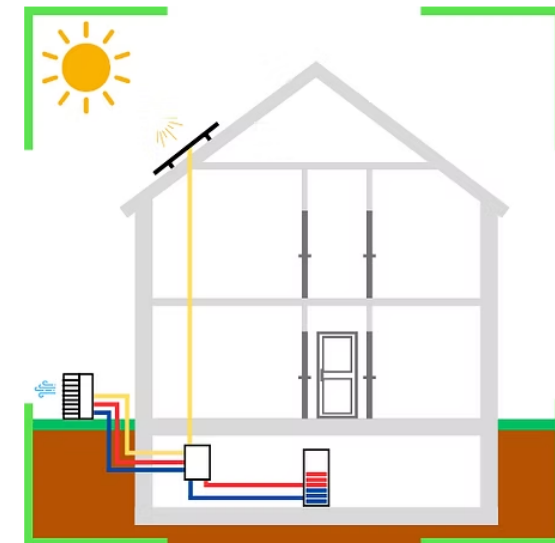
Geschossdecke

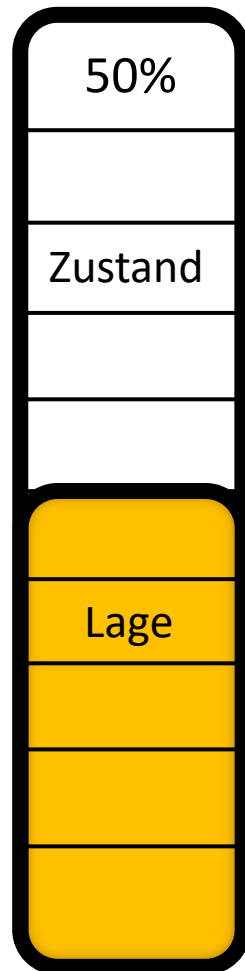


Lüftungsanlage

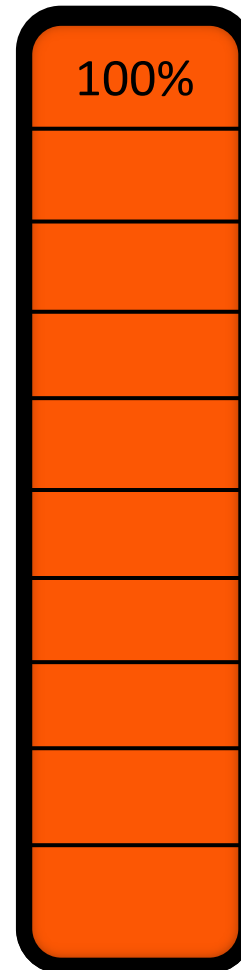


Heizung/ Warmwasser

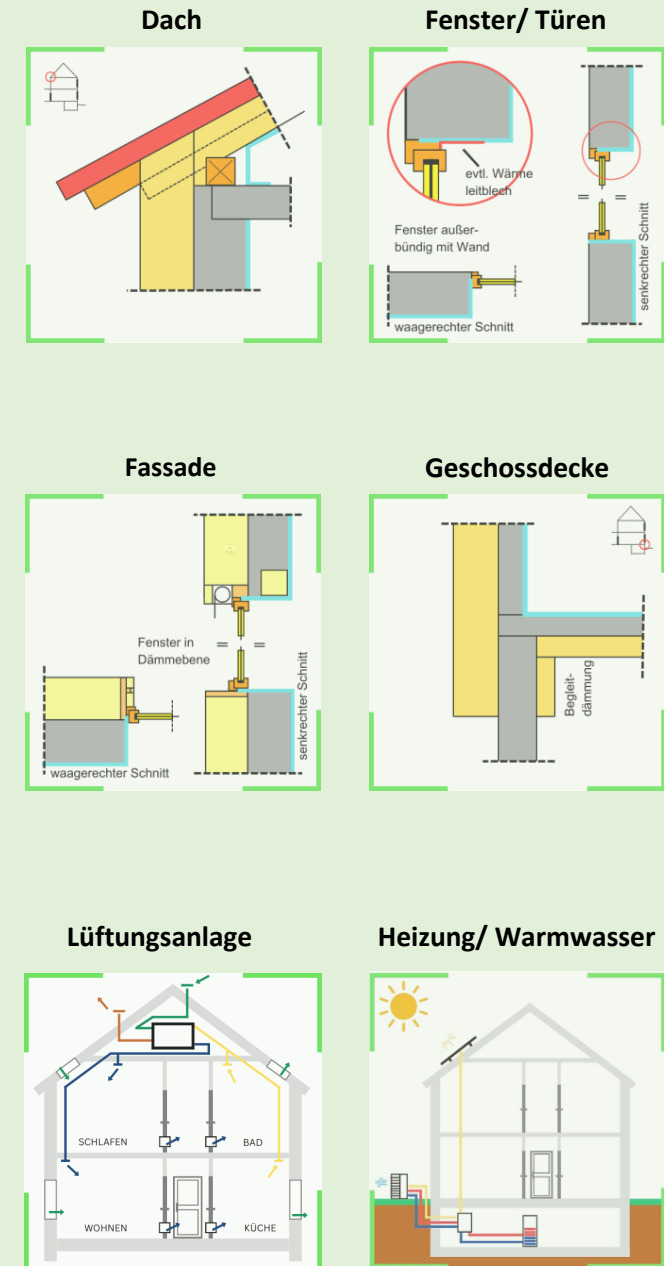


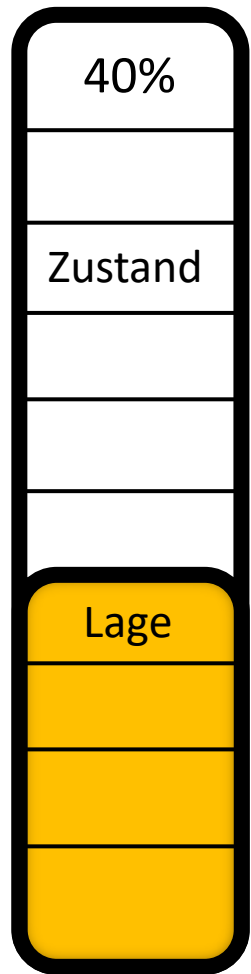


Immobilienwert
€/m²

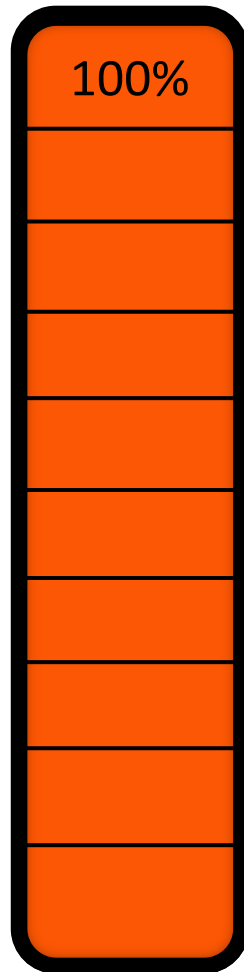


Endenergieverbrauch
kWh/a





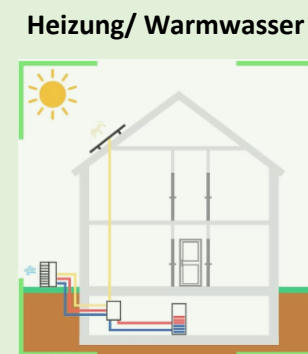
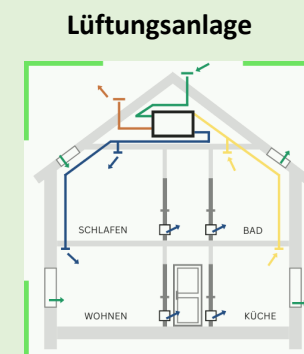
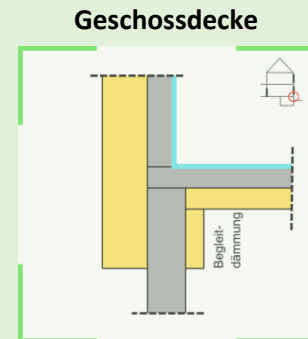
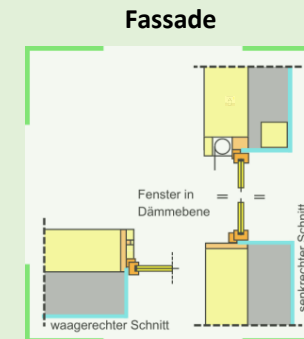
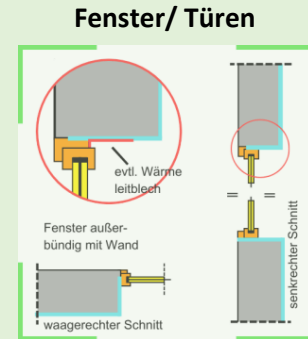
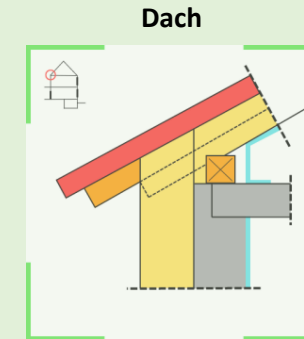
Immobilienwert
€/m²

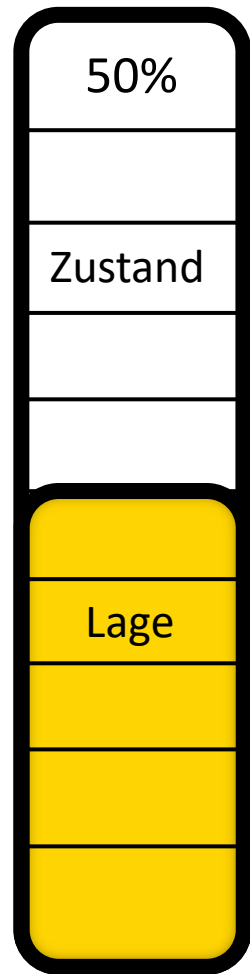


Endenergiebedarf
kWh/a

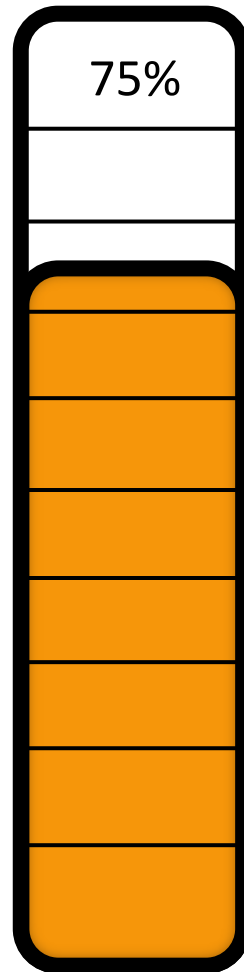
Beispielhaus

Baujahr: 1972
Wohnfläche: 140 m²

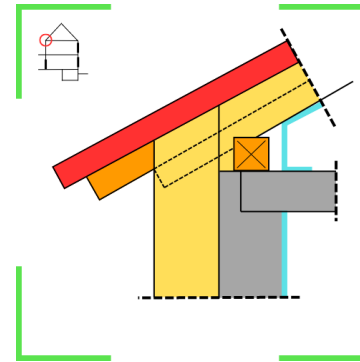




Immobilienwert
€/m²



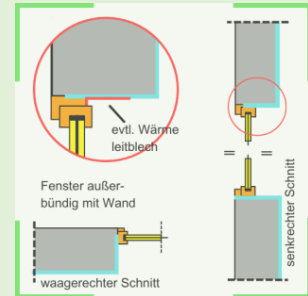
Endenergiebedarf
kWh/a



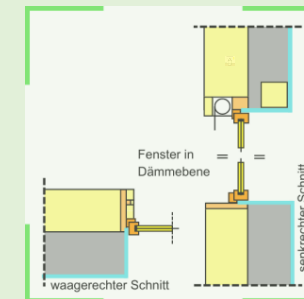
Dach



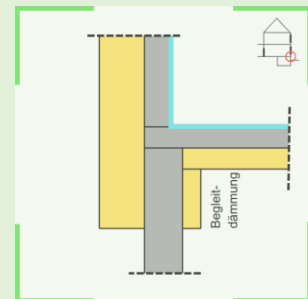
Fenster/ Türen



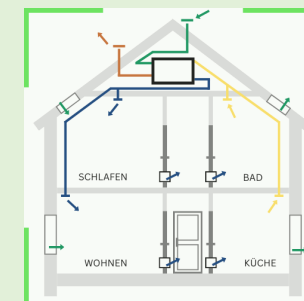
Fassade



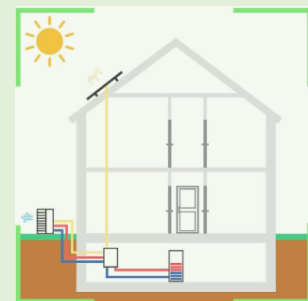
Geschossdecke

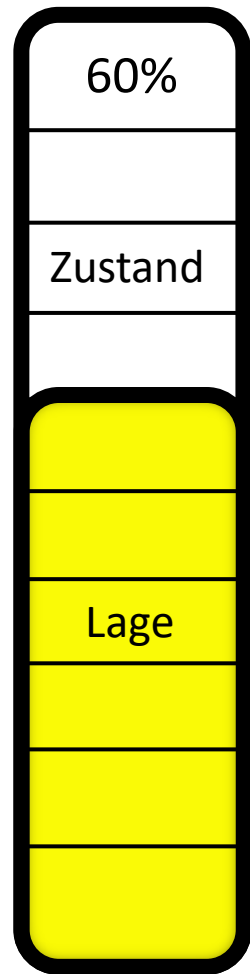


Lüftungsanlage

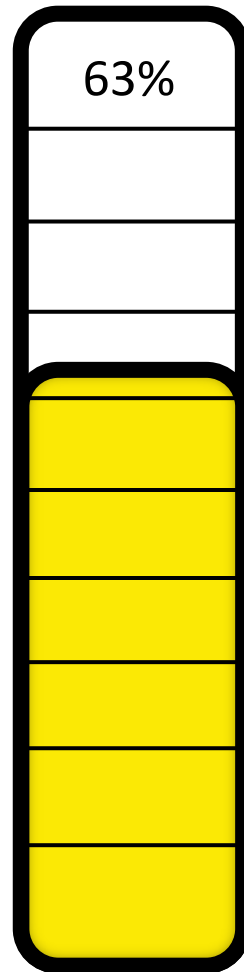


Heizung/ Warmwasser

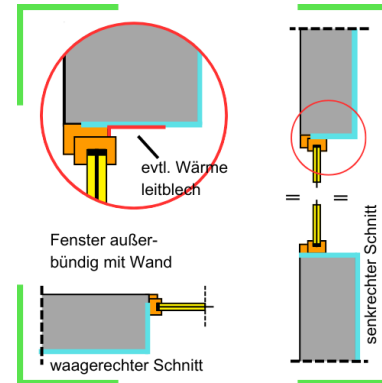




Immobilienwert
€/m²

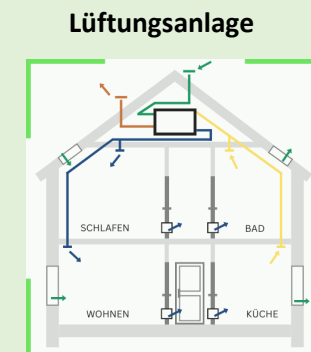
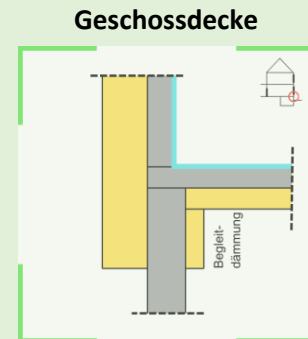
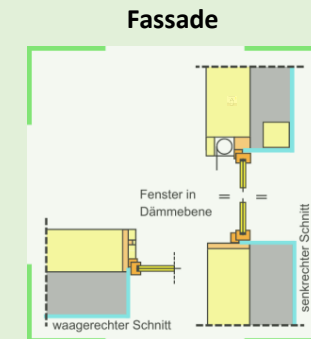
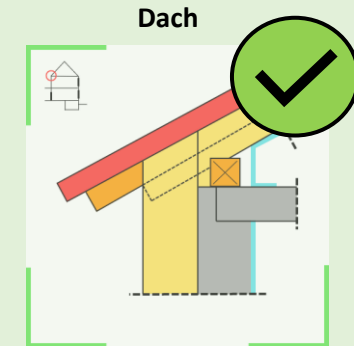


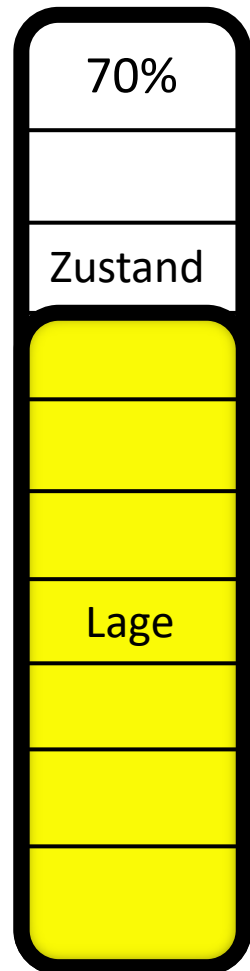
Endenergiebedarf
kWh/a



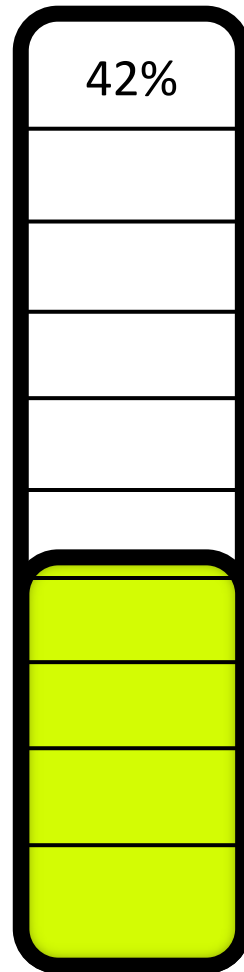
Fenster/ Türen

Ohne serielle Sanierung

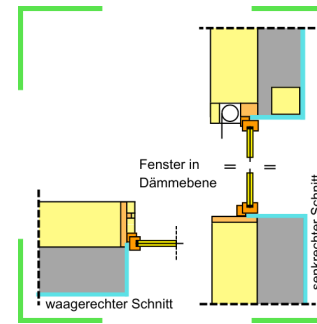




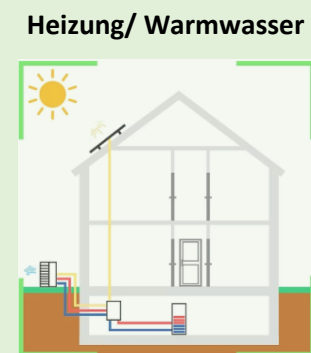
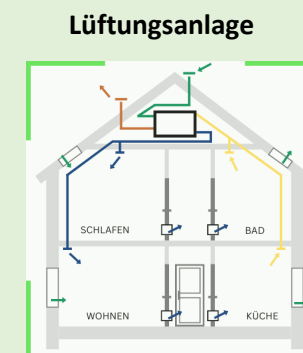
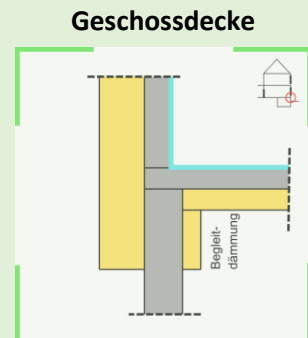
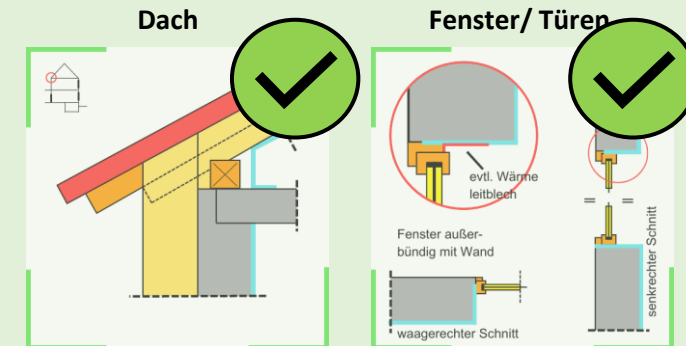
Immobilienwert
€/m²

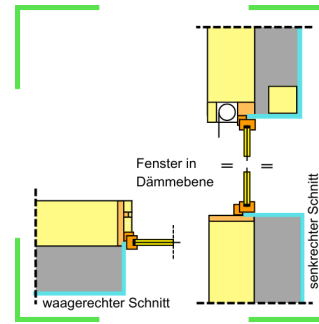


Endenergiebedarf
kWh/a

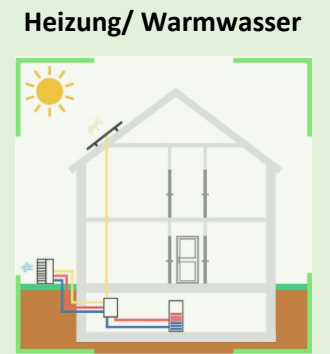
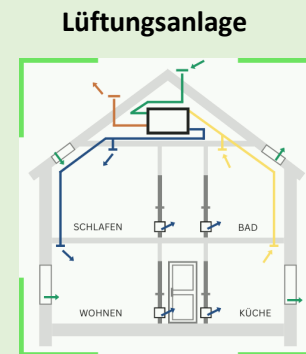
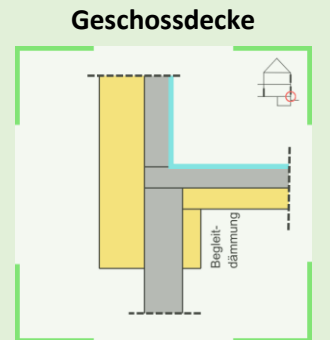
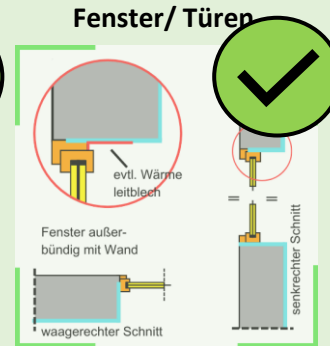
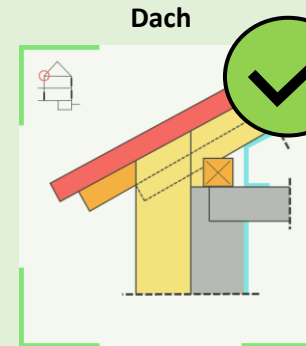


Fassadendämmung

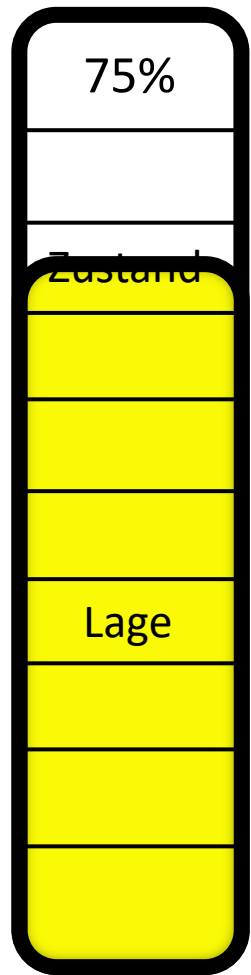




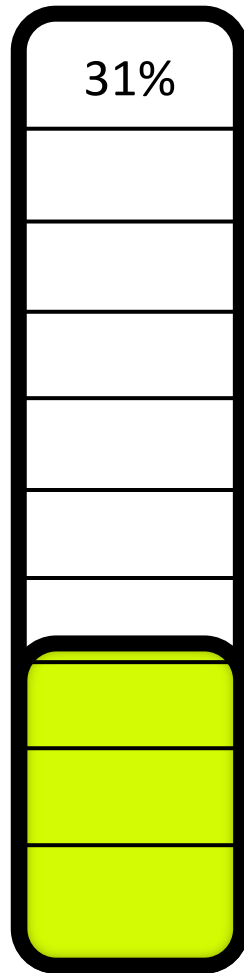
Fassadendämmung



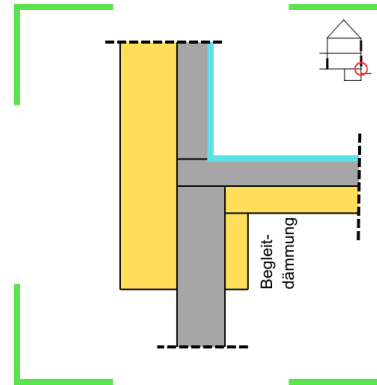
Serielle Sanierung



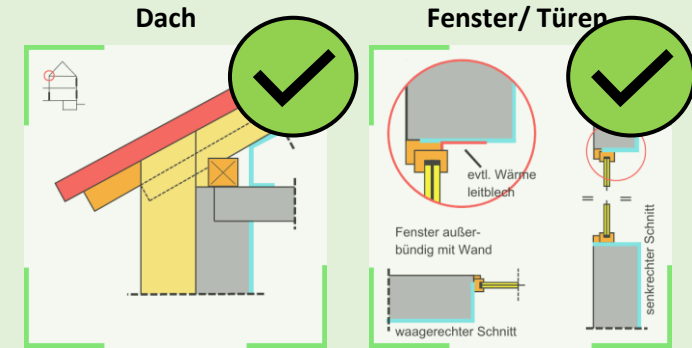
Immobilienwert
€/m²



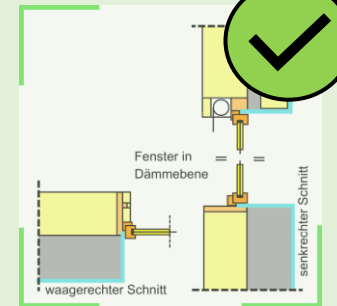
Endenergiebedarf
kWh/a



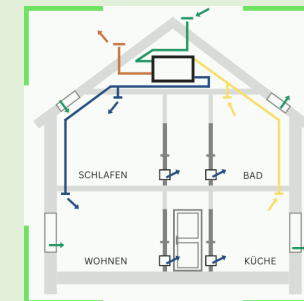
Kellerdecke



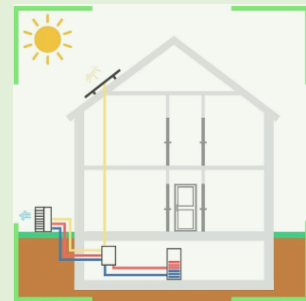
Fassadendämmung

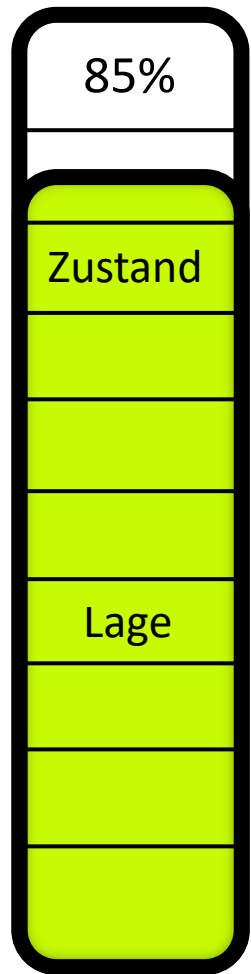


Lüftungsanlage

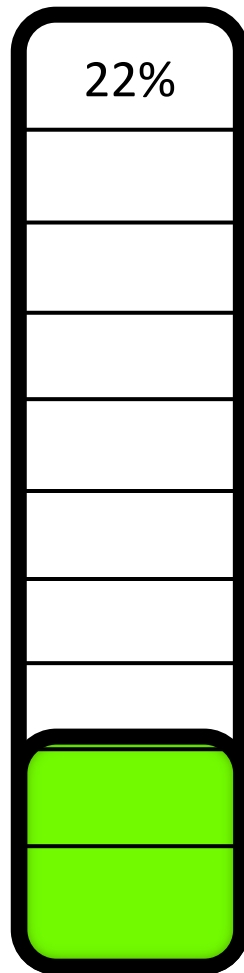


Heizung/ Warmwasser

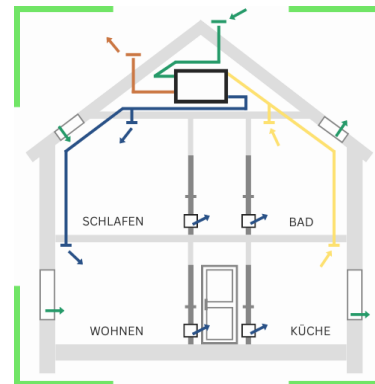




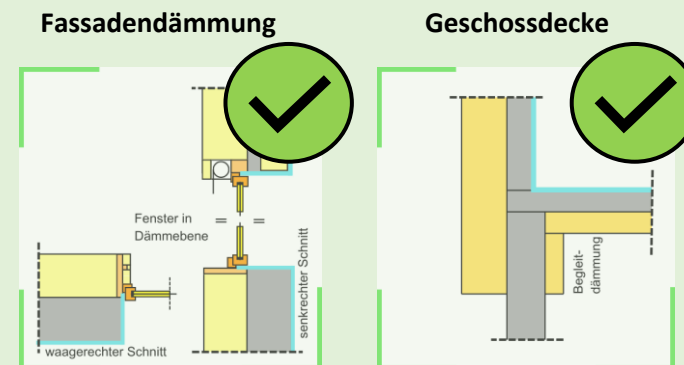
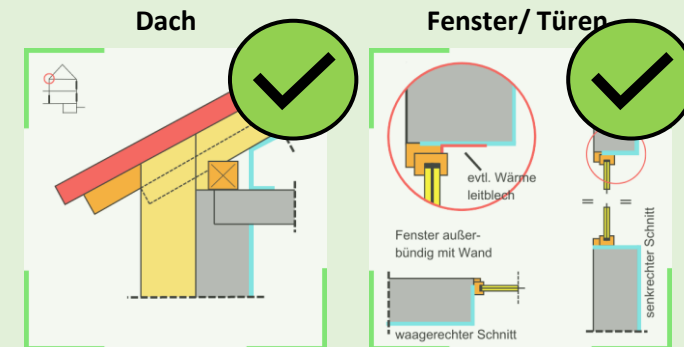
Immobilienwert
€/m²



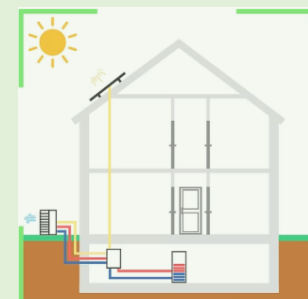
Endenergiebedarf
kWh/a

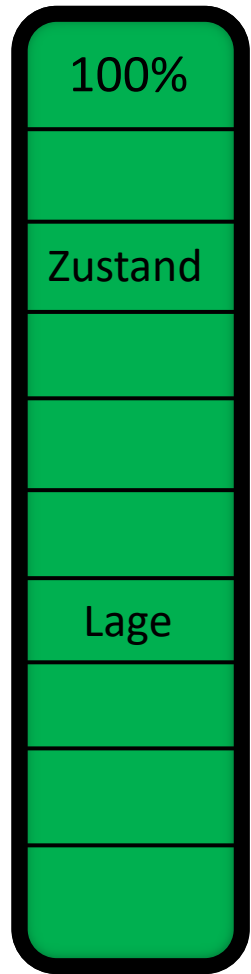


Lüftungsanlage

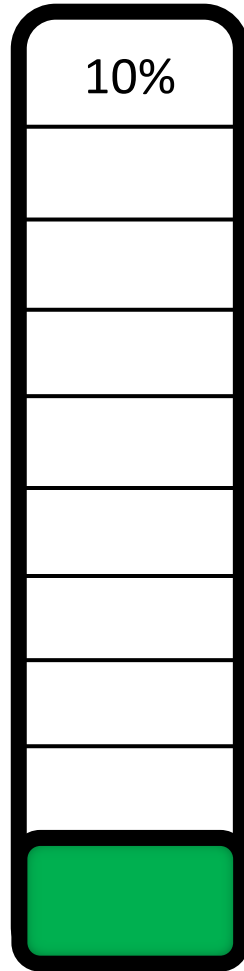


Heizung/ Warmwasser

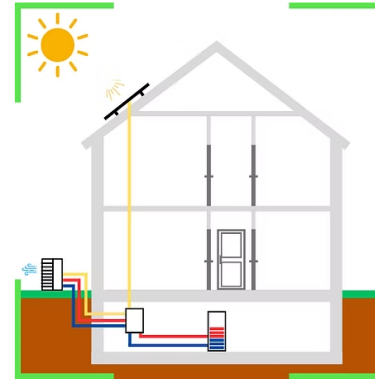




Immobilienwert
€/m²



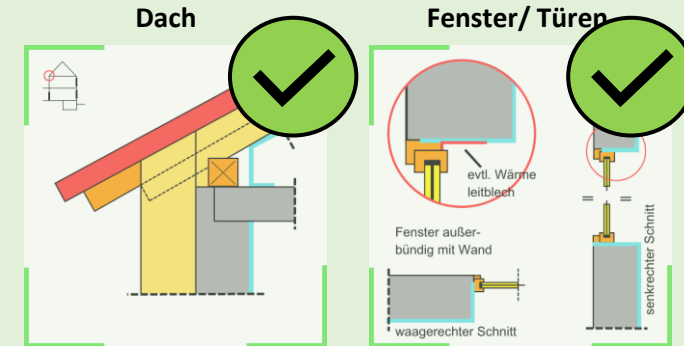
Endenergiebedarf
kWh/a



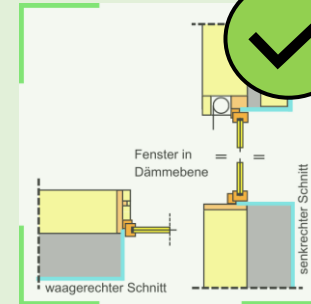
Heizung/ Warmwasser



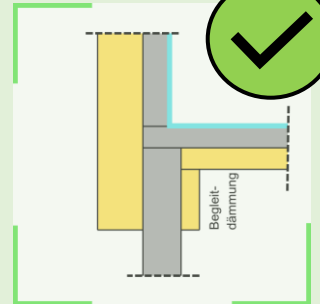
PV-Anlage



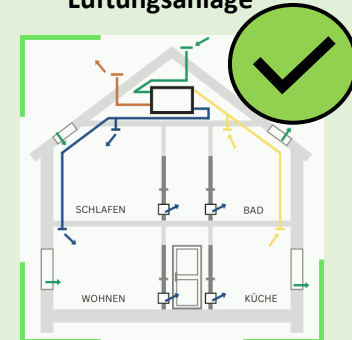
Fassadendämmung



Geschossdecke

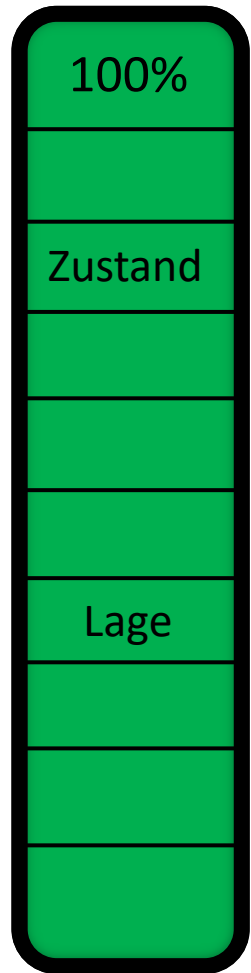
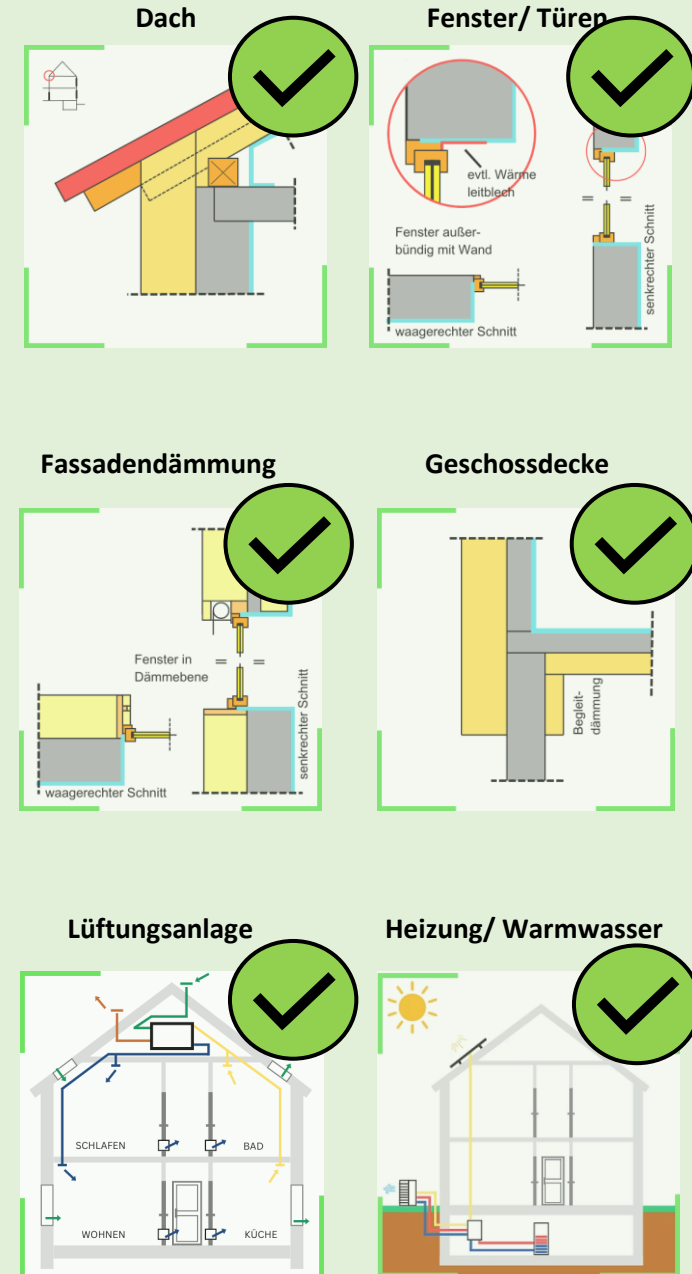


Lüftungsanlage

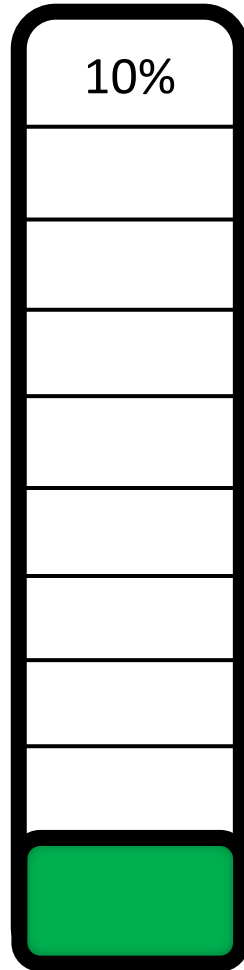


Zusammenfassung

Geschaffene Wohnfläche: +140 m²
+ Wertsteigerung
+ CO₂-Einsparung
+ Energieeinsparung
+ Unabhängigkeit

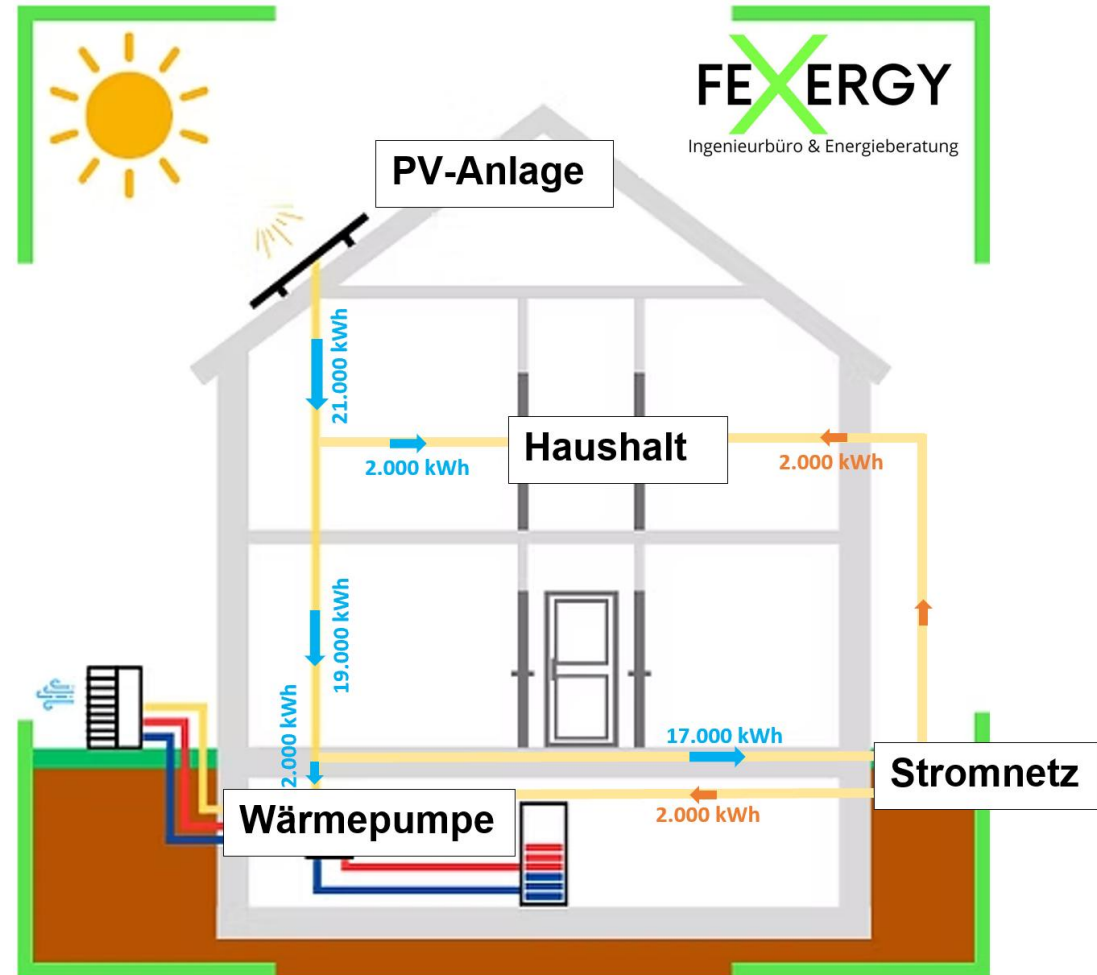


Immobilienwert
€/m²



Endenergiebedarf
kWh/a

Das Energiekonzept -Unabhängigkeit-



Strombezug: 4.000 kWh zu 0,30 €/kWh =

1.200 € Energiekosten

Stromeinspeisung: 17.000 kWh zu 0,075 €/kWh =

1.275 € Einnahmen

Wir erstellen Ihren individuellen Sanierungsfahrplan



Skala zur Energieeffizienz:



inklusive Kellerwänden



oberer Gebäudeabschluss



inklusive Dachfenster



unterer Gebäudeabschluss



inkl. Speicherung und Übergabe

Skala zur Energieeffizienz:



inklusive Kellerwänden



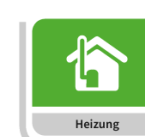
oberer Gebäudeabschluss



inklusive Dachfenster



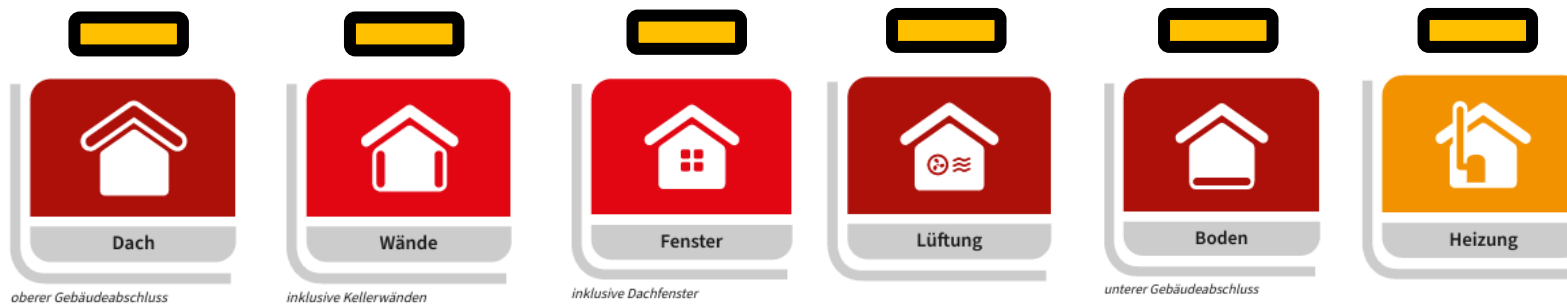
unterer Gebäudeabschluss



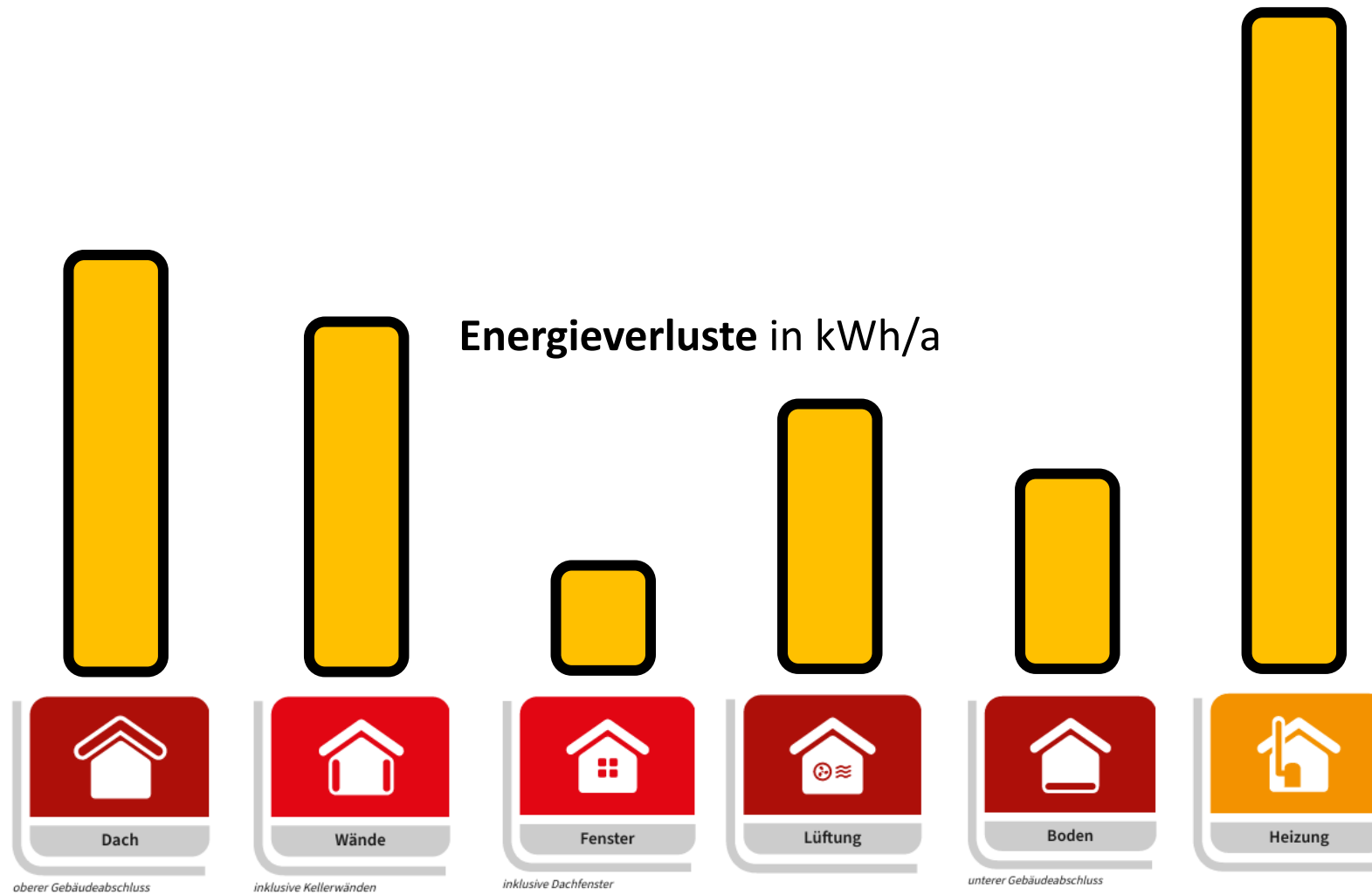
inkl. Speicherung und Übergabe

Wir erstellen Ihren individuellen Sanierungsfahrplan

Energieverluste in kWh/a



Wir erstellen Ihren individuellen Sanierungsfahrplan



Wir erstellen Ihren individuellen Sanierungsfahrplan



Wir erstellen Ihren individuellen Sanierungsfahrplan



Förderung:

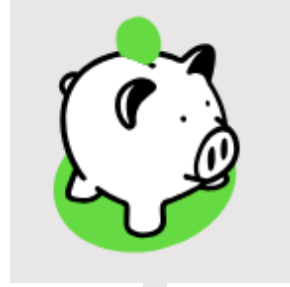


&



Bundesamt
für Wirtschaft und
Ausfuhrkontrolle

Wir erstellen Ihren individuellen Sanierungsfahrplan



Bundesamt
für Wirtschaft und
Ausfuhrkontrolle

max. 45% im Rahmen einer
Komplettsanierung
(max. 67.500€ pro Wohneinheit)

15% **Grundförderung** (max. 4.500€ pro Wohneinheit)

+5% bei vorliegenden
Sanierungsfahrplan (max. 12.000€ pro Wohneinheit)

Gerne unterstützen wir Sie bei Ihrem Sanierungsvorhaben



Architekturbüro
Mießl GmbH

Asamstraße 18, 86529 Schrobenhausen
Tel.: 08252-8874-0
Mail: energie@miessl.de



Ingenieurbüro & Energieberatung

Waldeckstraße 10, 86529 Schrobenhausen
Tel.: 0160-4588235
Mail: info@fexergy.de